

# RDA

## Solutions, LLC

SOLUTIONS ARE OUR BUSINESS

RDA 20 watt 12V C1D2

durability  
dependability

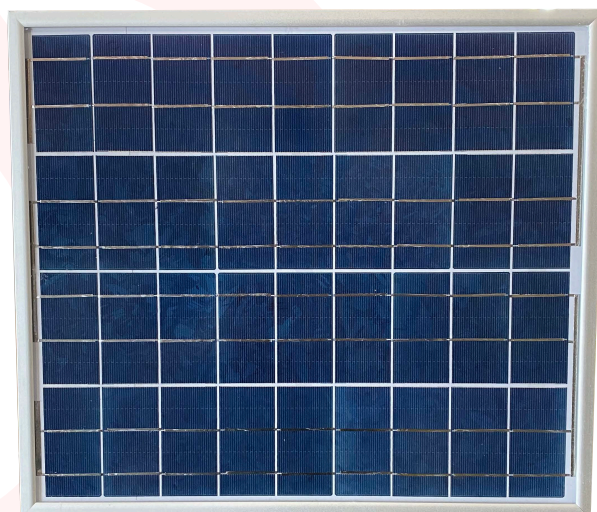
At **RDA Solutions, LLC**, we value our customers feedback. We are consistently working with engineers to develop a line of off-grid solar panels that are specifically designed to withstand the many rigors of the oil and gas industry.

We pride ourselves in service before, during and after the sale.

## Introducing the

### **RDA 20 watt 12V Class 1 Division 2 Solar Panel**

- 1.5mm Aluminum Frame
- Quality "A" Grade Solar Cells
- IP65 Junction Box with Knockouts
- Designed specifically for the Oil and Gas market



# RDA Solutions, LLC

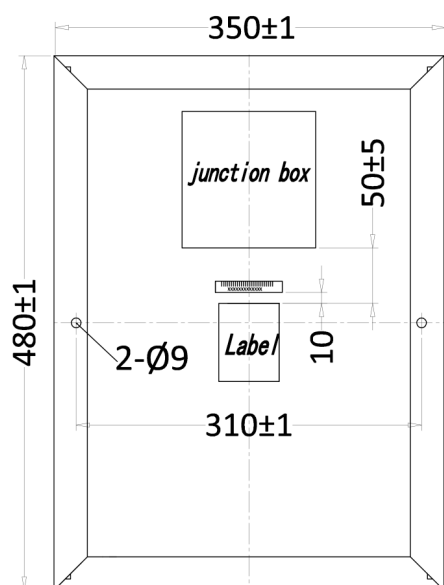
RDA 20 watt 12V C1D2

## Electrical Specs:

Maximum Power	20W
Power Tolerance	(+3/-0%)
Voltage at max power(Vmp)	18.0V
Current at max power(Imp)	1.11A
Open Circuit Voltage(Voc)	21.4V
Short Circuit Current(Isc)	1.18A
Operating Temperature	-40 °C - +90 °C
Maximum system Voltage	1000V
Maximum Sys Fuse Rating	10A

## Mechanical Specs:

Solar Cell	Polycrystalline solar cell
# of cells & Connections	36=2x18 pcs
Dimensions of module	480x350x50mm
Weight	2.27kg
Junction Box	Ip65 rated



## RDA 20 watt 12V Solar Panel

- Class 1 Division 2 (FM18US0174X)
- 1.5mm Aluminum Frame
- Quality "A" Grade Solar Cells
- IP65 Junction Box with Knockouts
- Designed specifically for the Oil and Gas market

